



ISO 9001
CERTIFIED

FREEZE PROBLEMS?
CALL THE GURU
1-800-288-GURU

MODEL FPP AUTOMATIC DRAIN PLUG



OPERATION:

The **FPP** may be thought of as an automatic freeze-out plug with one important difference: The stainless steel **FPP** cartridge releases itself from its body at a pre-set water temperature, rather than being forced out by the tremendous pressure of expanding ice. This provides almost a full one inch bore to rapidly drain a cooling system before damage can occur. Resetting and rearming the **FPP** prior to refilling the system is easily accomplished by simply reheating the cartridge and utilizing the slotted actuator feature. With the unique built-in check valve (on Models T and FL only), it's possible to replace the entire **FPP** without draining the system.

APPLICATIONS:

- Water cooled compressor heads
- Exposed water lines
- Tanks and related piping
- Exposed chiller lines
- Sump and reservoir protection

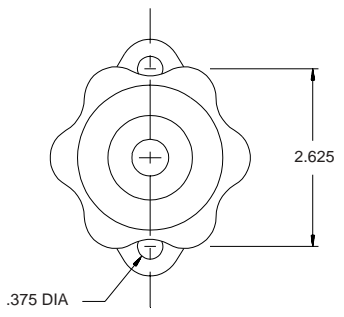
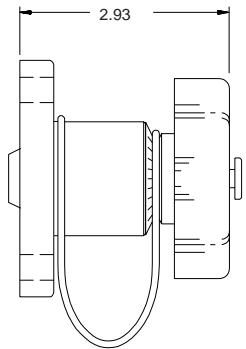
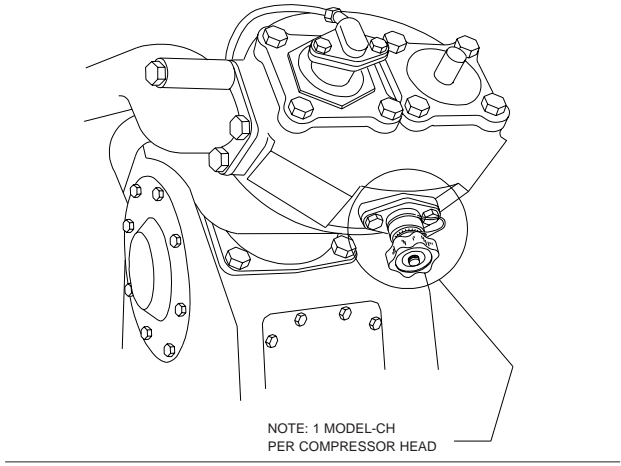
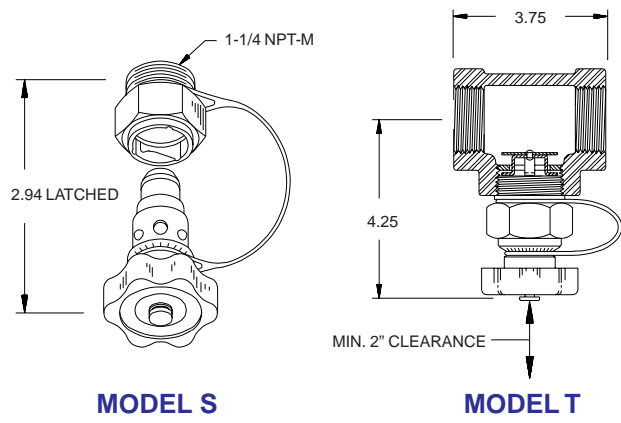
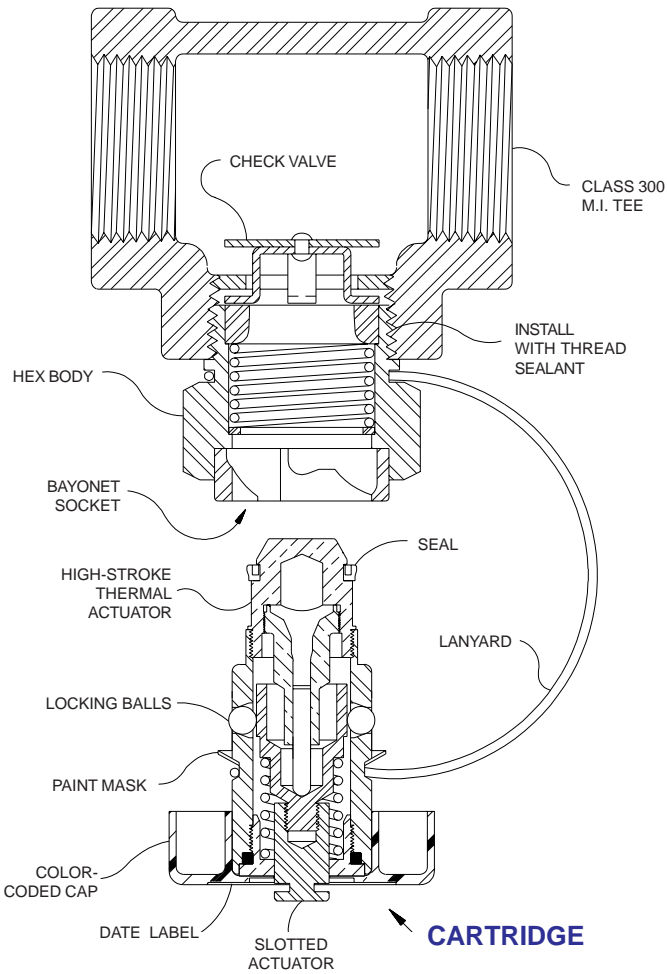
ADVANTAGES:

- Will not accidentally trip or dump
- Easy installation
- Completely mechanical - No electrical or air connections
- Model T can be maintained or replaced without draining system
- Cartridge can be reinstalled with simple twist of wrist
- Rapid draining
- Easy system refill

DESIGN FEATURES:

- Senses only water temperatures
- Long service life
- Easy maintenance with interchangeable cartridges
- Several body styles available for various applications: 1-1/4" NPT, tee and compressor head
- Release temperature of 47°F or 40°F

AUTOMATIC DRAIN PLUG VALVE MODEL FPP CONFIGURATIONS



MODEL CH

(Specify release temperature of either 40°F (4.4°C) or 47°F (8.3°C))
The THERM-OMEGA-TECH **FPP** is available in the models shown.

Therm-Omega-Tech, Inc. reserves the right to change the design and specifications without notice.

Phone: 215-674-9992
FAX: 215-674-8594
CALL THE VALVE GURU
TOLL FREE
1-800-288-GURU (4878)

 **THERM-OMEGA-TECH INC.**
353 Ivyland Road
Warminster, PA 18974-2205

Visit our internet site at: <http://www.thermomegatech.com> E-MAIL: valves@thermomegatech.com