

IC/SP

INTERCHANGEABLE CARTRIDGE SCALD PROTECTION VALVE



BENEFITS

- IC/SP temperatures up to 105°F meet ANSI Z258.1 standards
- Protects safety showers from overtemperature conditions, keeping personnel safe
- Long service life
- Fast response
- Discharges the minimum amount of water required

DESIGN FEATURES

- Available in brass or stainless steel body
- Stainless steel fittings, spring, and plug
- Corrosion resistant
- Exclusive *Thermoloid*® sensor/controller
- Compact, low-mass
- Two wrench flats for easy installation
- Ram type plug for reliable and tight shutoff

APPLICATIONS

A safety hazard for plant personnel will occur through solar radiation or overheating caused by steam or electric tracing resulting in extremely high temperatures at the point of use. The IC/SP valve prevents this safety hazard. When installed in safety showers, eyewash stations, and other locations exposed to the same source of overheating as the system, the IC/SP will be heated just as the pipe system. The valve will open to establish flow until the overtemperature water is eliminated and it will then modulate closed.



OPERATION

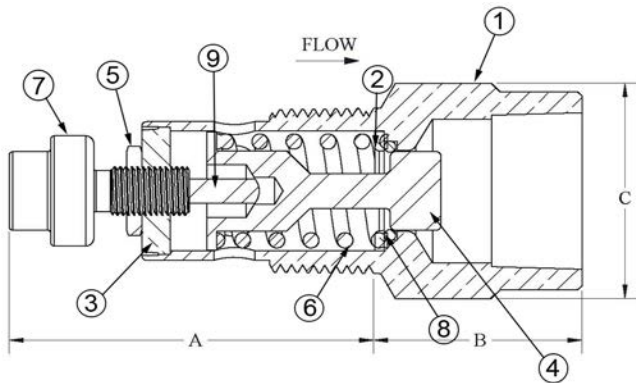
IC/SP valves are installed within the heated system. The IC/SP-105 will initiate flow when the thermostatic actuator senses water temperature of 98°F (36.7°C) and will remain open as long as the discharge water temperature is above 95°F (35°C).

IC/SP

INTERCHANGEABLE CARTRIDGE SCALD PROTECTION VALVE



PARTS & MATERIALS



ITEM	DESCRIPTION	MATERIAL
1	CARTRIDGE BODY	Brass or 300 Series SS
2	SEAL RETAINER	Brass or 300 Series SS
3	ACTUATOR BUSHING	Brass or 300 Series SS
4	PLUG	300 Series SS
5	NUT	300 Series SS
6	OPERATING SPRING	300 Series SS
7	THERMAL ACTUATOR	Brass or 300 Series SS
8	SEAT SEAL	PTFE
9	PISTON	Brass or 300 Series SS

DIMENSIONS & CAPACITIES

Connection	A		B		C		Weight		Z (Drain)	C _v	Maximum Operating Pressure	Maximum Temperature
	in	mm	in	mm	in	mm	Lb	Kg				
3/4" NPT	2.3	58.7	1.3	33	1.4	35.6	0.5	0.2	3/4" NPT	1.3	100 PSIG (6.9 BAR)	200°F (93.3°C)

ORDERING

Part Number	Description
195 - 000000 - XXX	3/4" IC/SP Cartridge
195 - 220000 - XXX	3/4" IC/SP SS Cartridge

NOTES

- Standard full open temperature, "XXX", is 105°F. Optional open temperatures, "XXX": 95°F, 100°F, 110°F, and 115°F.
 a. **Note: Closing temperature is typically 10°F below opening temperature.**
- A #20 mesh strainer is recommended.
- Warranty information disclosed at www.thermomegatech.com/terms-conditions/



ThermOmegaTech, Inc.
353 Ivyland Road
Warminster, PA 18974

1-877-379-8258
www.ThermOmegaTech.com



ICSP
REV: 5/23/17