

TYPICAL THERM-O-MIX/SAFETY SHOWER -PIPING INSTALLATION SCHEMATIC

NOTE 1 - CONDENSATE OUTLET 1" DIA MINIMUM

CAUTION: This line must be free-flowing in order for the unit to operate correctly. NO STEAM TRAP SHOULD BE USED ON THIS LINE! ADDITION OF STEAM TRAP OR RESTRICTION WILL CAUSE SERIOUS SCALDING HAZARD! During operation of the Therm-O-Mix Station, this line will discharge condensate and drain water from the system and some flash steam vapors. It must be piped so that there is no back pressure restriction. Leaving a 2" air gap immediately following the condensate drain is highly recommended to prevent back pressure. Do not tie other drain lines into condensate pipe.

This line should be piped with 1" Schedule 40 (minimum) pipe to convenient drain, catch basin or open drain. If operated in freezing temperatures the drain line must be less than 6" in length and steeply sloped to prevent blockage due to freezing condensate. If the installation layout requires a longer or shallow sloped drain, the piping must be heat traced and insulated.

NOTE 2 - WATER HAMMER ARRESTER

Contact Water Hammer Arrestor manufacturer for proper sizing.

NOTE 3 - STEAM PRESSURE RELIEF VALVE

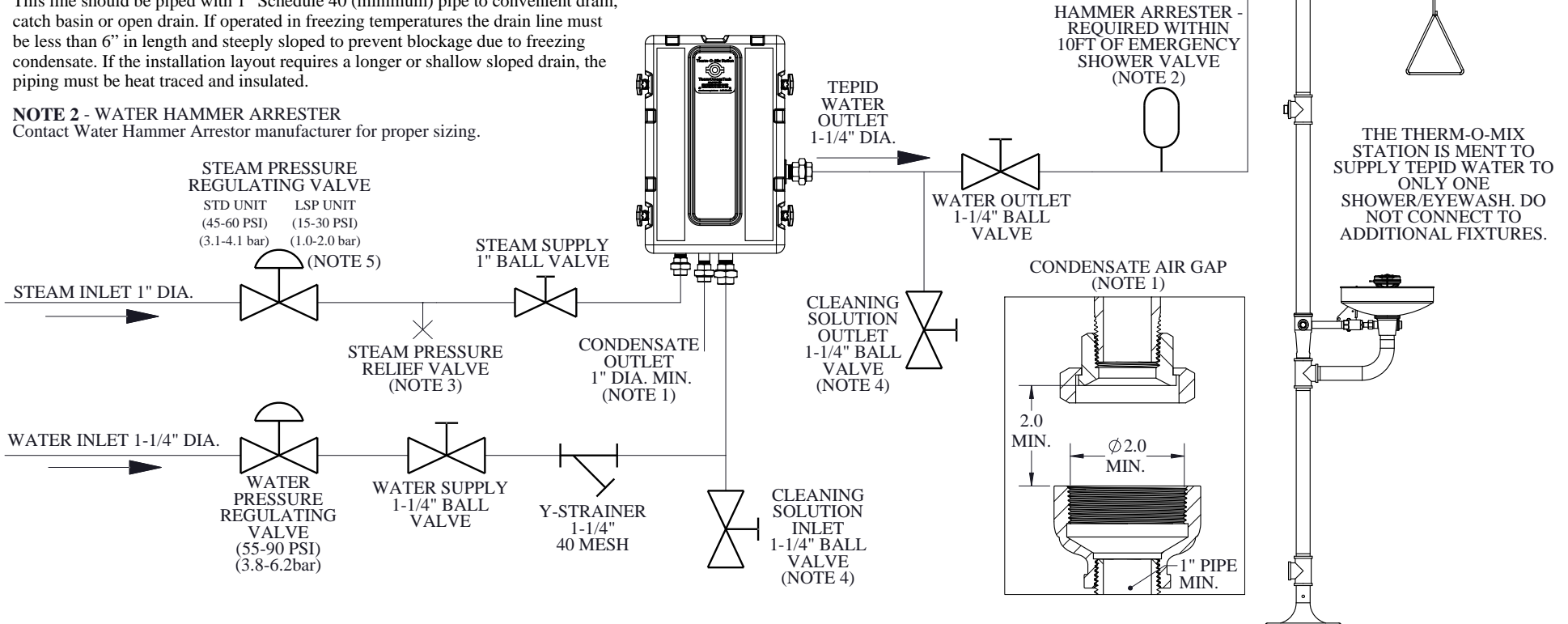
If the supply pressure is greater than 75 psi (5.2 bar), then a pressure relief valve must be used after steam regulator.

NOTE 4 - CLEAN-IN-PLACE BALL VALVES

The heat exchanger and valve components may become clogged/coated with mineral deposits over time. Installing ball valves as seen below will allow for in place cleaning. Consult factory for proper cleaning instruction.

NOTE 5 - STEAM PRESSURE

The Therm-O-Mix is available in two steam pressures: Standard - 45-60 PSI; Low Steam Pressure, LSP - 15-30 PSI



TOLERANCES UNLESS OTHERWISE SPECIFIED X.XX ± 0.1 X.XXX ± 0.05	 253 Hybrid Road, Warrimaroo, WA 18074-2205 USA ThermOmegaTech.com • 251.674.9992 • 1.877.579.8258 (CERTIFIED)	ISO 9001	SHEET 1 OF 1	DWN BY EWF	CHK BY **	SCALE 1:12	REV C	DATE 2/27/2018
			TITLE: TYPICAL THERM-O-MIX/SAFETY SHOWER -PIPING INSTALLATION SCHEMATIC			INV. NUMBER: 387-X12100-003-INSTALL-SCHEMATIC		
UNLESS OTHERWISE SPECIFIED ALL DIMENSIONS IN INCHES ANGLE TOLERANCE: XXX° ± 1/2°	THIS DRAWING AND THE INFORMATION CONTAINED HEREIN ARE THE PROPERTY OF THERMOMEGATECH AND IT IS NOT TO BE REPRODUCED, COPIED OR USED IN ANY WAY DETRIMENTAL TO THE INTEREST OF THERMOMEGATECH.							