

ITCH ASSEMBLY

INSTRUMENT TEMPERATURE CONTROL HEATER ASSEMBLY

BENEFITS

- Maintain enclosure temperature accurately over a wide range of ambient temperatures
- Economically controls steam flow
- Eliminates danger of overheating
- Self-operating - no outside power or signal required, eliminating explosion hazard
- Complete kit with standard tube connections for quick and easy installation

DESIGN FEATURES

- Exclusive **Thermoloid®** thermal actuator
- All stainless steel construction
- Compact, low mass - fast response
- Corrosion resistant - long service life
- Ram-type plug for tight reliable shutoff
- Operates in narrow temperature band
- Operating temperatures unaffected by variable inlet pressures
- Wide choice of set-points

OPERATION

The thermal actuator on the TV/SC-A valve senses internal enclosure temperature and regulates steam flow to the heating coil accordingly. The TV/HAT at the steam inlet keeps the steam supply hot to prevent freezing even when the TV/SC-A valve is closed. The TV/HAT at the coil outlet regulates condensate discharge temperature for maximum economy with minimized overheating potential.

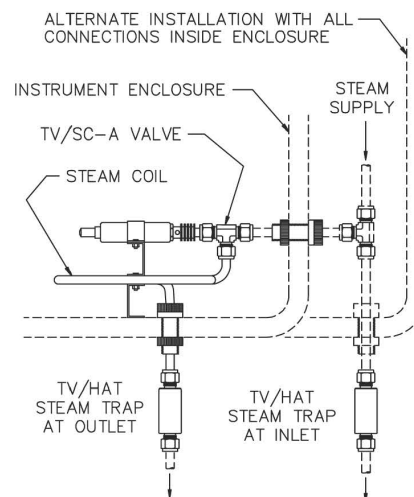
The **ITCH Assembly** comes complete with steam coil, mounting bracket, and TV/SC-A valve assembly, two TV/HAT valves, and two weather-tight bulkhead fittings for 3/8 tubing connections. TV/SC-A and TV/SC-I valves (with external connections) are also available separately.



APPLICATIONS

The **ITCH Assembly** assures accurate temperature control in an instrument or analyzer enclosure. This self-contained unit provides a reliable, economical alternative to costly, hazardous electric heating. The compact thermostatic control valve senses enclosure temperature and automatically regulates the flow of steam to the steam coil to maintain the desired temperature.

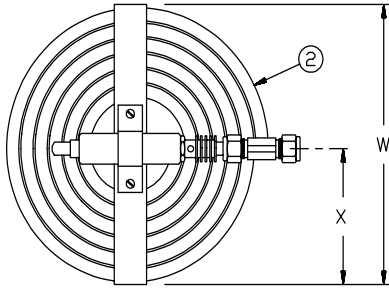
TYPICAL INSTALLATION



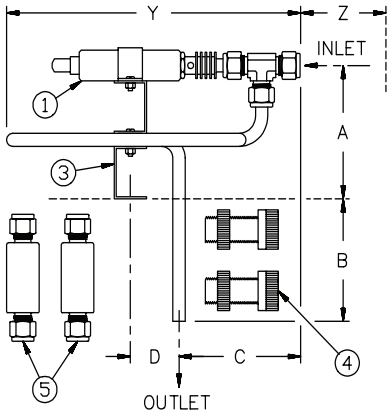
ITCH ASSEMBLY

INSTRUMENT TEMPERATURE CONTROL HEATER ASSEMBLY

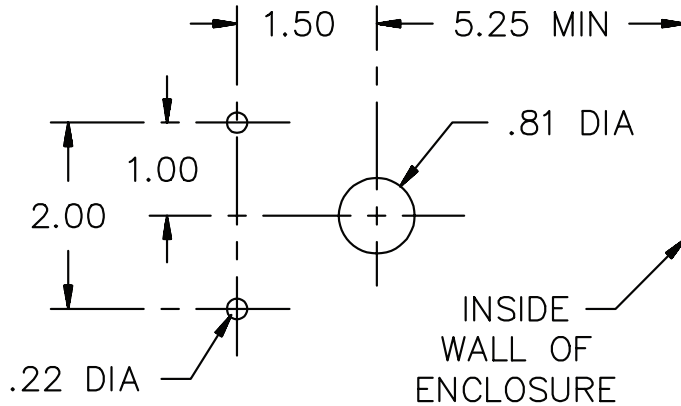
PARTS & MATERIALS



ITEM	DESCRIPTION	MATERIAL
1	TV/SC-A	SEE CATALOG PAGE
2	STEAM COIL	300 SERIES SS
3	MOUNTING BRACKET	300 SERIES SS
4	BULKHEAD FITTING	ACETAL COPOLYMER
5	TV/HAT	SEE CATALOG PAGE



MOUNTING DIMENSIONS



DIMENSIONS & CAPACITIES

TUBE OD	A		B		C		D		W		X		Y		Z		Cv	MAX PRESSURE PSIG (BAR)	MAXIMUM TEMPERATURE
	IN	MM	IN	MM	IN	MM	IN	MM	IN	MM	IN	MM	IN	MM	IN	MM			
3/8"	3.8	97	3.5	89	3.8	97	1.5	38	8.0	203	4.0	102	9.0	229	1.5	38	0.5	200 (13.8 BAR)	250°F (121°C)

ORDERING

PART NUMBER ¹	DESCRIPTION ²
753-000000-XXX	3/8" ITCH ASSEMBLY

NOTES

- Full open temperatures "XXX" available: 35°F, 40°F, 50°F, 55°F, 60°F, 65°F, 75°F, 85°F, 90°F, 95°F, 100°F, 105°F, 110°F, 125°F, 130°F, 140°F, 150°F, 155°F, 160°F, 170°F, 180°F, 190°F and 200°F.
a. Note: Closing temperature is typically 10°F above opening temperature.
- A #20 mesh strainer is recommended for use with all port sizes.
- Warranty information disclosed at www.thermomegatech.com/terms-conditions/



ThermOmegaTech®, Inc.
353 Ivyland Road
Warminster, PA 18974

1-877-379-8258
www.ThermOmegaTech.com

ITCH ASSEMBLY
8/2/2023

Because of continuous improvements, ThermOmegaTech®, Inc. reserves the right to change the design and specifications without notice