

BENEFITS

- Simplifies winterization procedures
- Reduces winterization maintenance and labor
- Efficiently automates steam tracing
- Eliminates wasted steam
- No outside power required
- Quick and easy installation

DESIGN FEATURES

- Compact, low mass - Fast response
- Corrosion resistant - Long service life
- Exclusive **Thermoloid®** sensor/controller
- All stainless steel construction
- Ram-type plug for tight reliable shutoff
- Narrow temperature band
- Operating temperatures unaffected by pressure
- Wide choice of set points

APPLICATIONS

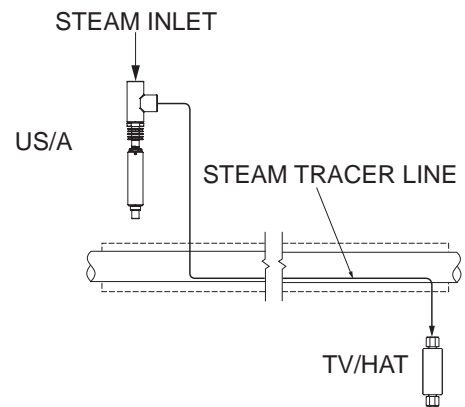
There are many uses for these compact, self-contained, automatic valves. Ambient sensing valves can be used to turn on steam, air, gas or liquids compatible with teflon and stainless steel in response to temperature change. Applications include automation of steam trace lines, control of pneumatically operated pumps for injection of anti-freeze liquids, ambient sensing water line freeze protection, etc. They are also ideal for controlling steam heated drum heater enclosures and plate or panel coil tank heaters.

OPERATION

At the designated set point, a thermostatic element located at one end of the valve, will open or close completely over a 10°F (5.5°C) differential (i.e. 35-45°F, 90-100°F, etc.) and control the flow of steam, gas, or fluid through the valve based on ambient temperature.



SAMPLE APPLICATION

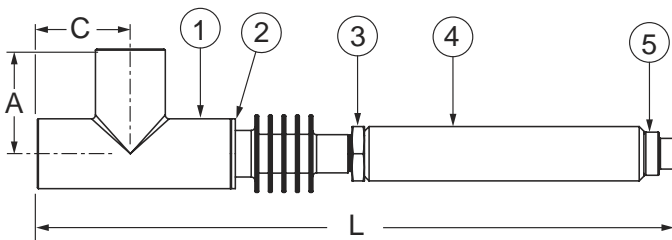


US/A AND US/AR

AMBIENT TEMPERATURE VALVE



PARTS & MATERIALS



ITEM	DESCRIPTION	MATERIAL
1	VALVE BODY	CF8M (316 SS)
2	YOKE	300 Series SS
3	CALIBRATION LOCKNUT	300 Series SS
4	ISOLATION EXTENSION	300 Series SS
5	THERMAL ACTUATOR	300 Series SS

DIMENSIONS & CAPACITIES

SIZE (NPT)	L		A		C		Weight		C _v	Maximum Operating Pressure	Maximum Temperature	
	in	mm	in	mm	in	mm	Lb	Kg			Valve End	Sensing End
1/2"	10.7	287	1.7	43	1.5	38	1.5	0.7	1.3	200 PSIG (13.8 BAR)	388°F (198°C)	250°F (121°C)
3/4"	11.5	292	1.8	45.7	1.8	45.7	1.7	0.8	2.0			

ORDERING

Part Number ¹	Description
614 - 000100 - XXX	½" US/A
615 - 000100 - XXX	¾" US/A
624 - 000100 - XXX	½" US/AR
625 - 000100 - XXX	¾" US/AR

NOTES

- Full open temperatures "XXX" available:
 - A Series:** 035°F, 040°F, 050°F, 055°F, 060°F, 065°F, 075°F, 085°F, 090°F, 095°F, 100°F, 105°F, 110°F, 125°F, 130°F, 140°F, 150°F, 155°F, 160°F, 170°F, 180°F, 190°F, and 200°F
 - AR Series:** 040°F, 045°F, 050°F, 060°F, 070°F, 075°F, 085°F, 095°F, 100°F, 105°F, 110°F, 115°F, 120°F, 125°F, 130°F, 140°F, 150°F, 160°F, 170°F, 175°F, 180°F, 190°F, 200°F, and 210°F.
 - Note:** Closing temperature is typically 10°F above opening temperature for Direct Acting valves and 10°F below opening temperature for Reverse Acting valves.
- A #20 mesh strainer is recommended.
- Warranty information disclosed at www.thermomegatech.com/terms-conditions/



Therm-Omega-Tech®, Inc.
353 Ivyland Road
Warminster, PA 18974

1-877-379-8258
www.ThermOmegaTech.com



USA
Rev: 7/10/18