



# ESS Emergency Safety Shower Water Heater

*Tepid Water for Emergency Safety Shower/Eyewash Stations*

## Features

- Heavy duty Construction with Hydrastone cement lining provides tank longevity
- Copper-silicon alloy tappings cannot rust nor corrode
- High impact composite jacket cannot rust nor corrode and eliminates potential damage during installation and transit
- 3" thick polyurethane foam insulation reduces standby heat loss by over 24% compared to industry standard 2" insulated tanks

## Perfectly Packaged System

- Factory packaged with the Therm-O-Mix® Station/WWM simplifies installation and ensures a safe reliable supply of tepid water
- All electrical operating controls are factory selected and wired to ensure reliable operation
- Dial gauge provides visual indication of water temperature and pressure



## Safety

- Mixing valve designed specifically for emergency drench systems ensures a constant flow of tepid water
- Mixing valve prohibits delivery of overheated water to prevent scalding
- Provides tepid water even when an accident causes a loss of electric power
- Reduces the risk of Legionella because water is stored at an elevated temperature

## Reliable

- Full five (5) year non pro-rated tank warranty
- Each valve is performance tested at the factory to ensure proper operation

# ESS Part Number Designation

Valve Criteria						
Family Designation	Storage Capacity	Tepid Water Temperature	Standard Ratings KW	Tank Type	Voltage/Phase/HZ	
	0 = 119 Gal.	0 = 85°F 1 = 75°F	0 = 1.5 1 = 3 2 = 4 3 = 4.5 4 = 6 5 = 10 6 = 7 7 = 12 8 = 6.3	0 = SL (Hydrastone Cement Lined) 3 = SL-OWP (Hydrastone Cement Lined w/ Outdoor Weather Package)	0 = 240-1-60 1 = 480-3-60 2 = 208-1-60 3 = 277-1-60 4 = 120-1-60 5 = 480-1-60 6 = 208-3-60 7 = 600-3-60	
389	0	0	3	0	0	000

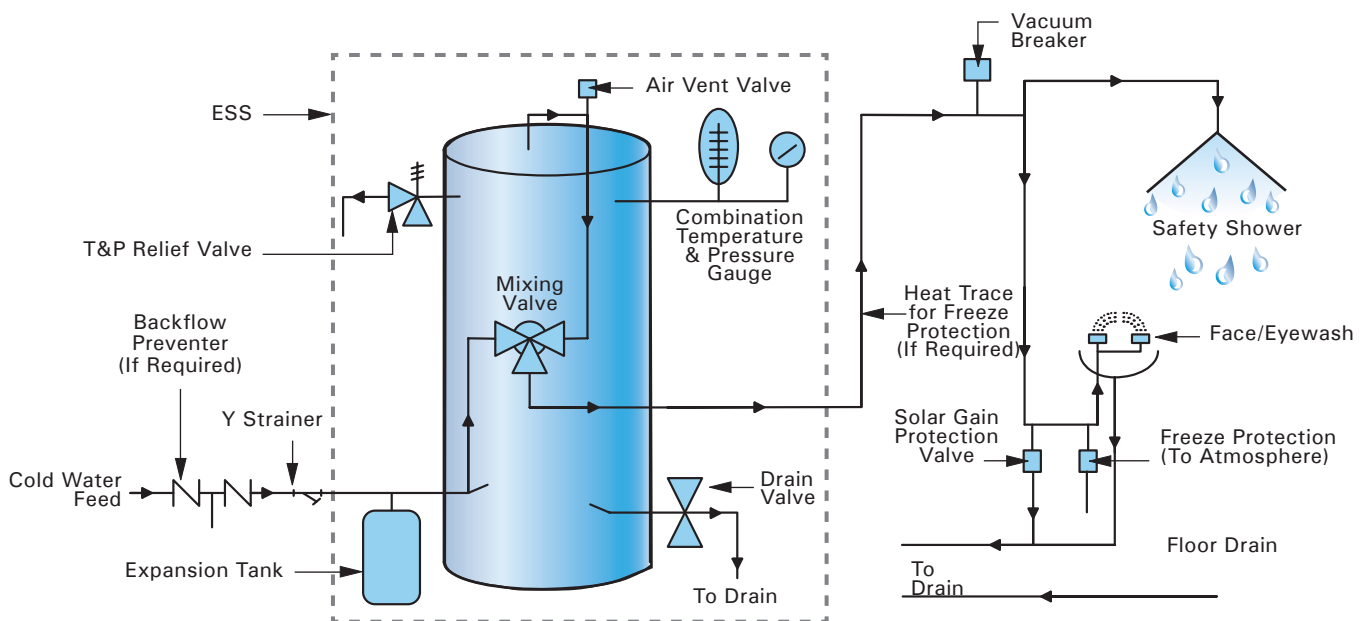
**Note:** For additional features such as alarm controllers, explosion-resistant construction, NEMA 4X enclosure, outdoor weather package, heat tracing, or integrally welded points, please contact ThermOmegaTech®.

**Example:** 389-003000-000 The ESS Water Heater emergency tepid water delivery system with a storage capacity of 119 Gallons, 85°F set point of the mixing valve and a 4.5 KW rating. Storage tank is lined with Hydrastone cement and operates at 240 Volts single-phase power.

## ESS Water Heater Specifications

<b>Tank:</b>	Hydrastone Cement Lined Steel	<b>Tepid Water Outlet Size:</b>	1 1/4" Female NPT	<b>Mixing Valve Cv:</b>	10.0	<b>Elements:</b>	Copper Sheathed
<b>Storage Capacity:</b>	119 Gallons (see note)	<b>Drain Size:</b>	3/4" GHT	<b>Pressure Drop at 20 GPM:</b>	4 PSI	<b>Insulation:</b>	3" Polyurethane Foam
<b>Orientation:</b>	Vertical	<b>Relief Valve Size:</b>	3/4" Female NPT	<b>Minimum Supply Pressure:</b>	40 PSIG	<b>Tank Warranty Standard:</b>	5 Year Non Pro-Rated
				<b>Optional:</b>			10 Year Non Pro-Rated
<b>Voltages:</b>	120 thru 600 Volt	<b>Relief Valve Type:</b>	T&P, 210°F, 150 PSI	<b>Hi-Limit:</b>	190°F	<b>Electrical Warranty:</b>	1 Year
<b>Phase:</b>	1 or 3	<b>Thermostat Range:</b>	100-180°F	<b>Design WP:</b>	150 PSI	<b>Jacket:</b>	High Impact Colorized Composite
<b>Cold Water Inlet Size:</b>	1 1/2" Female NPT	<b>Piping:</b>	Copper Tubing	<b>Design TP:</b>	300 PSI	<b>Color:</b>	Brown and Tan

**Note:** Alternate storage capacities are available for smaller or larger requirements. Please consult factory for sizing requirements.



**NOTE:** For systems requiring recirculation see ThermOmegaTech® IMI for typical piping schematic.