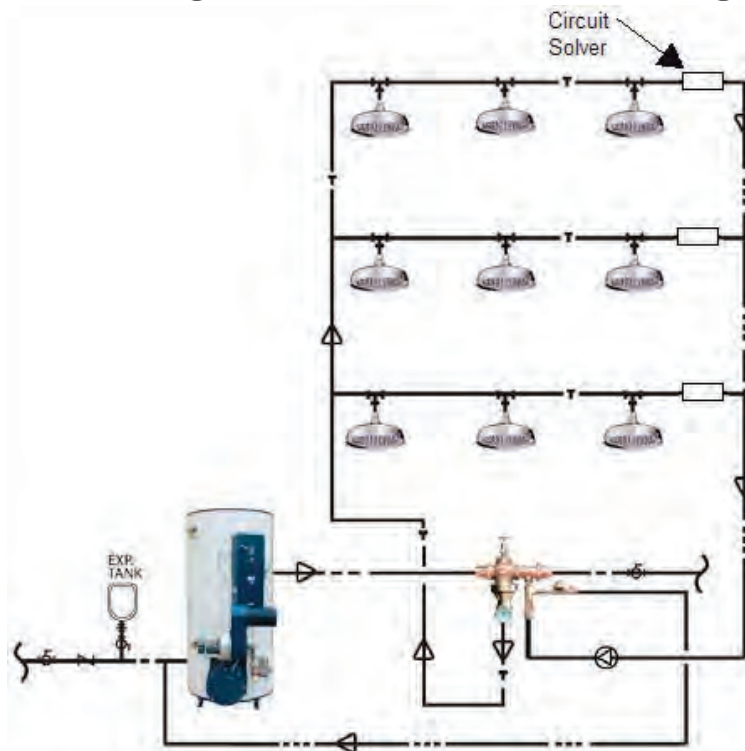


INSTALLATION INSTRUCTIONS CSUA, CSUAS, CSUA-PP & CSUAS-PP

- 1) Install assembly with proper flow direction as marked on valve body. **This is critical with assemblies that have an integrated check valve.**
- 2a) Use suitable pipe thread sealant rated for domestic water applications on all male pipe threads; if using PTFE sealant tape, make sure not to apply tape to the first thread to avoid cutting the PTFE tape and causing potential obstructions to flow.
- 2b) When using Viega ProPress[®] adapters, please consult the Viega ProPress[®] Installation Manual for proper installation, tools, Smart Connect technology, etc.
(<https://www.viega.us/en/products/Catalog/Metal-systems/ProPress.html#downloads>)
- 3) CircuitSolver[®] Union Assemblies are designed to be installed at the end of each domestic hot water supply just prior to the return line. *See diagram below.*
- 4) For water systems with particulate/dirt problems, consider using the CircuitSolver[®] Union Assembly with integrated strainer if a strainer is not already used upstream.
**Strainer must be maintained in order to avoid flow obstruction.*
- 5) A convenient drain port allows for system branch to be flushed without disconnecting plumbing lines.

MULTI-BRANCH PARALLEL PIPING CIRCUIT



SCHEMATIC DIAGRAMS



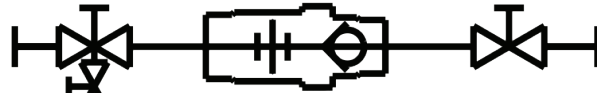
CircuitSolver Union Assembly (CSUA)



CircuitSolver Union Assembly (CSUA)
with integrated Check Valve



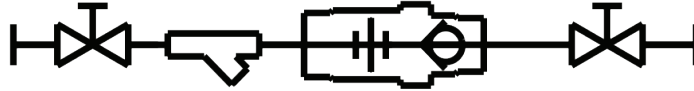
CircuitSolver Union Assembly (CSUA-W)
with side drain ball valve



CircuitSolver Union Assembly (CSUA-W)
with integrated Check Valve and side drain inlet ball valve



CircuitSolver Union Assembly (CSUAS)
with integrated Strainer



CircuitSolver Union Assembly (CSUAS)
with integrated Check Valve and Strainer



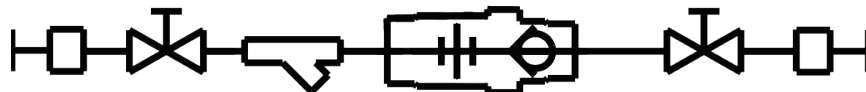
CircuitSolver Union Assembly
with ProPress Ends (CSUA-PP)



CircuitSolver Union Assembly
with ProPress Ends and integrated Check Valve (CSUA-PP)



CircuitSolver Union Assembly
with ProPress Ends and integrated Strainer (CSUAS-PP)



CircuitSolver Union Assembly
with ProPress Ends and integrated Check Valve and Strainer (CSUAS-PP)



WARNING: This product can expose you to chemicals, for example lead, nickel, acrylonitrile, which are known to the State of CA to cause cancer, birth defects, or reproductive harm. For more information, go to www.P65Warnings.ca.gov

ProPress® and Viega® are registered trademarks of Viega GmbH

Warranty information disclosed at www.thermomegatech.com/terms-conditions/

CSUA IMI
REV: 8/30/19