



Installation Checklist Therm-O-Mix®

Customer Name:	Installation Location:
Contact Number:	Unit Identifier:
Project Name and Location:	
Customer PO Number:	Serial Number(ThermOmegaTech Internal Use Only):

Highlighted Areas Must be Completed For PO to be Accepted
Please Initial to Agree to the Below Installation Requirements

Steam Supply Pressure must be: Standard: 45-60 PSI or Low Pressure: 15-30 PSI	
For Steam Pressure Greater Than 75 PSI, Relief Valve and Steam Regulator are Required	
Water Hammer Arrester to be Installed Within 10ft. of Emergency Shower	
Drain Line To Air Gap	
Drain Line 1" Minimum	
Drain Line Unrestricted	
Water Supply Pressure must be 55 PSIG - 90 PSIG	

Operating Therm-O-Mix® outside of the above conditions can cause potentially hazardous conditions and failures may not be covered by warranty.

Please sign below as acceptance of these terms, conditions and installation requirements.
Return via email to valves@thermomegatech.com to authorize production.

Print Name: _____

Signature: _____

Title & Company: _____

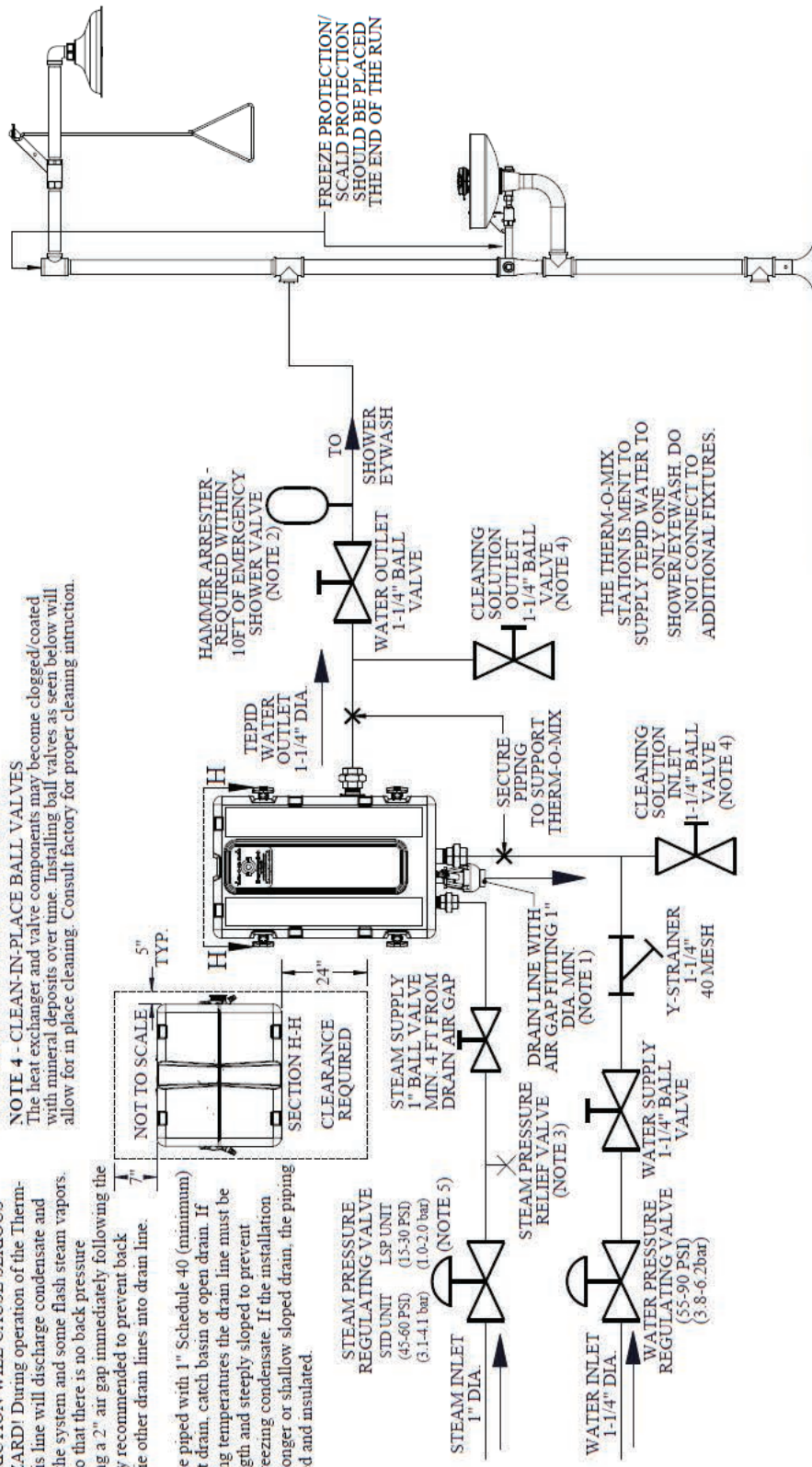
Date: _____

TYPICAL THERM-O-MIX/SAFETY SHOWER PIPING INSTALLATION SCHEMATIC

NOTE 1 - DRAIN LINE 1" DIA MINIMUM
CAUTION: This line must be free-flowing in order for the unit to operate correctly. NO STEAM TRAP SHOULD BE USED ON THIS LINE! ADDITION OF STEAM TRAP OR RESTRICTION WILL CAUSE SERIOUS SCALDING HAZARD! During operation of the Therm-O-Mix Station, this line will discharge condensate and drain water from the system and some flash steam vapors. It must be piped so that there is no back pressure restriction. Leaving a 2" air gap immediately following the drain line is highly recommended to prevent back pressure. Do not tie other drain lines into drain line.
 This line should be piped with 1" Schedule 40 (minimum) pipe to convenient drain, catch basin or open drain. If operated in freezing temperatures the drain line must be less than 6" in length and steeply sloped to prevent blockage due to freezing condensate. If the installation layout requires a longer or shallow sloped drain, the piping must be heat traced and insulated.

NOTE 2 - WATER HAMMER ARRESTER
 Contact Water Hammer Arrestor manufacturer for proper sizing.
NOTE 3 - STEAM PRESSURE RELIEF VALVE
 If the supply pressure is greater than 75 psi (5.2 bar), then a pressure relief valve must be used after steam regulator.
NOTE 4 - CLEAN-IN-PLACE BALL VALVES
 The heat exchanger and valve components may become clogged/coated with mineral deposits over time. Installing ball valves as seen below will allow for in place cleaning. Consult factory for proper cleaning instruction.

NOTE 5 - STEAM PRESSURE
 The Therm-O-Mix is available in two steam pressures: Standard - 45-60 PSI; Low Steam Pressure, LSP - 15-30 PSI



THE THERM-O-MIX STATION IS MENT TO SUPPLY TEPID WATER TO ONLY ONE SHOWER/EYEWASH DO NOT CONNECT TO ADDITIONAL FIXTURES.

DESIGNED BY	150	SCALE	1:1	REV.	DATE
CHECKED BY	5001				2/27/2018
TYPICAL THERM-O-MIX SAFETY SHOWER PIPING INSTALLATION SCHEMATIC					
387-XU1100-003-INSTALL-SCHEMATIC					